

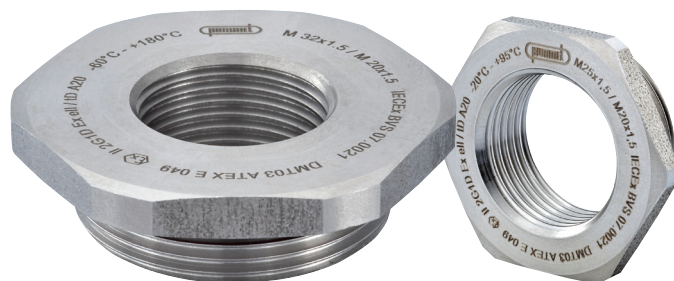


Thread Reducers: (303) Stainless Steel - Metric & PG Threads, IP 68/69K, 150 PSIG, 10 BAR

Part Numbers		Thread Type & Size		Dimensions in Inches (mm)		
-4°F to 203°F (-20°C to 95°C)	-76°F to 356°F (-60°C to 180°C)	Male Thread A	Female Thread B	H	T	X
		Page 59 for Thread Specs	Page 59 for Thread Specs	Overall Height	Thread Length	Wrench Flat
RM-1612-SX	RM-1612-SX-S	M16 x 1.5	M12 x 1.5	.35" (9)	.20" (5)	.67" (17)
RM-2012-SX	RM-2012-SX-S	M20 x 1.5	M12 x 1.5	.37" (9.5)	.24" (6)	.87" (22)
RM-2016-SX	RM-2016-SX-S	M20 x 1.5	M16 x 1.5	.37" (9.5)	.24" (6)	.87" (22)
RM-2516-SX	RM-2516-SX-S	M25 x 1.5	M16 x 1.5	.41" (10.5)	.28" (7)	1.06" (27)
RM-2520-SX	RM-2520-SX-S	M25 x 1.5	M20 x 1.5	.41" (10.5)	.28" (7)	1.06" (27)
RM-3216-SX	RM-3216-SX-S	M32 x 1.5	M16 x 1.5	.49" (12.5)	.31" (8)	1.34" (34)
RM-3220-SX	RM-3220-SX-S	M32 x 1.5	M20 x 1.5	.49" (12.5)	.31" (8)	1.34" (34)
RM-3225-SX	RM-3225-SX-S	M32 x 1.5	M25 x 1.5	.49" (12.5)	.31" (8)	1.34" (34)
RM-4020-SX	RM-4020-SX-S	M40 x 1.5	M20 x 1.5	.51" (13)	.31" (8)	1.69" (43)
RM-4025-SX	RM-4025-SX-S	M40 x 1.5	M25 x 1.5	.51" (13)	.31" (8)	1.69" (43)
RM-4032-SX	RM-4032-SX-S	M40 x 1.5	M32 x 1.5	.51" (13)	.31" (8)	1.69" (43)
RM-5025-SX	RM-5025-SX-S	M50 x 1.5	M25 x 1.5	.59" (15)	.35" (9)	2.17" (55)
RM-5032-SX	RM-5032-SX-S	M50 x 1.5	M32 x 1.5	.59" (15)	.35" (9)	2.17" (55)
RM-5040-SX	RM-5040-SX-S	M50 x 1.5	M40 x 1.5	.59" (15)	.35" (9)	2.17" (55)
RM-6332-SX	RM-6332-SX-S	M63 x 1.5	M32 x 1.5	.65" (16.5)	.39" (10)	2.56" (65)
RM-6340-SX	RM-6340-SX-S	M63 x 1.5	M40 x 1.5	.65" (16.5)	.39" (10)	2.56" (65)
RM-6350-SX	RM-6350-SX-S	M63 x 1.5	M50 x 1.5	.65" (16.5)	.39" (10)	2.56" (65)
RQ-0907-SX	RQ-0907-SX-S	PG 9	PG 7	.35" (8.8)	.24" (6)	.67" (17)
RQ-1107-SX	RQ-1107-SX-S	PG 11	PG 7	.35" (9)	.24" (6)	.79" (20)
RQ-1109-SX	RQ-1109-SX-S	PG 11	PG 9	.35" (9)	.24" (6)	.79" (20)
RQ-1309-SX	RQ-1309-SX-S	PG13	PG 9	.37" (9.5)	.26" (6.5)	.87" (22)
RQ-1309-SX	RQ-1309-SX-S	PG13	PG 11	.37" (9.5)	.26" (6.5)	.87" (22)
RQ-1609-SX	RQ-1609-SX-S	PG 16	PG 9	.37" (9.5)	.26" (6.5)	.94" (24)
RQ-1611-SX	RQ-1611-SX-S	PG 16	PG 11	.37" (9.5)	.26" (6.5)	.94" (24)
RQ-1613-SX	RQ-1613-SX-S	PG 16	PG 13	.37" (9.5)	.26" (6.5)	.94" (24)
RQ-2111-SX	RQ-2111-SX-S	PG 21	PG 11	.41" (10.3)	.28" (7)	1.18" (30)
RQ-2113-SX	RQ-2113-SX-S	PG 21	PG 13	.41" (10.3)	.28" (7)	1.18" (30)
RQ-2116-SX	RQ-2116-SX-S	PG 21	PG 16	.41" (10.3)	.28" (7)	1.18" (30)
RQ-2916-SX	RQ-2916-SX-S	PG 29	PG 16	.45" (11.5)	.31" (8)	1.57" (40)
RQ-2921-SX	RQ-2921-SX-S	PG 29	PG 21	.45" (11.5)	.31" (8)	1.57" (40)
RQ-3621-SX	RQ-3621-SX-S	PG 36	PG 21	.49" (12.5)	.35" (9)	1.97" (50)
RQ-3629-SX	RQ-3629-SX-S	PG 36	PG 29	.49" (12.5)	.35" (9)	1.97" (50)
RQ-4229-SX	RQ-4229-SX-S	PG 42	PG 29	.53" (13.5)	.39" (10)	2.24" (57)
RQ-4236-SX	RQ-4236-SX-S	PG 42	PG 36	.53" (13.5)	.39" (10)	2.24" (57)
RQ-4836-SX	RQ-4836-SX-S	PG 48	PG 36	.53" (13.5)	.39" (10)	2.52" (64)
RQ-4842-SX	RQ-4842-SX-S	PG 48	PG 42	.53" (13.5)	.39" (10)	2.52" (64)



AISI (303) Stainless Steel Thread Reducers

Silicone version accommodates **-60°C** Temperature

